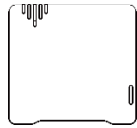


User Guide

Sound Level sensor (WS302)

1. Packing list



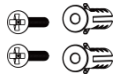
1 x WS 302 device



2 x Li-SOCI2 ER14505 battery



1 x 3M Double-Sided Tape

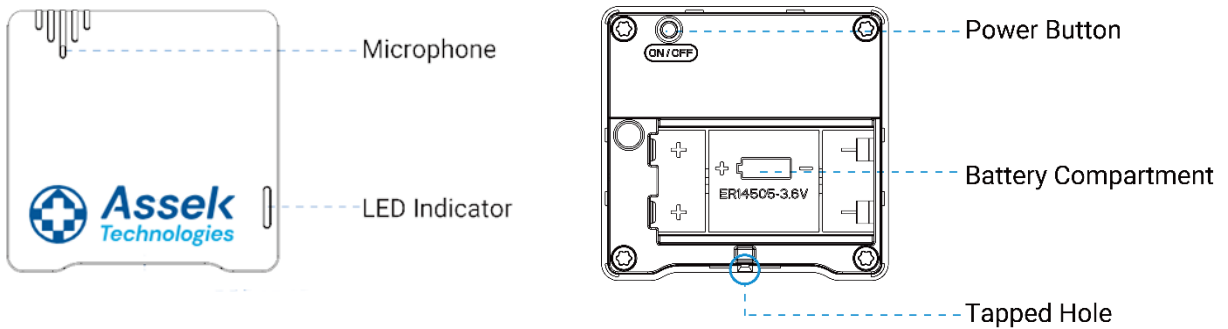


2 x Wall Mounting Kit



1 x Theft-detering screw

2. Hardware Overview

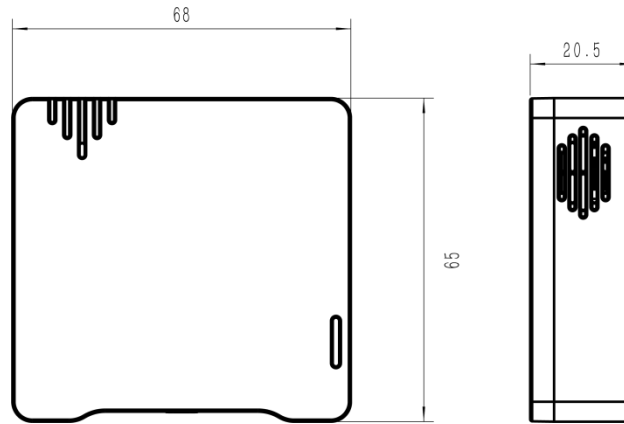


3. LED indicator light

Function	Action	LED Indicator
Power ON/OFF	Press and hold the power button for more than three seconds.	Start-up: Off → On
		Power off: On → off
Reset to factory default	Press and hold the power button for more than 10 seconds.	Blinks rapidly

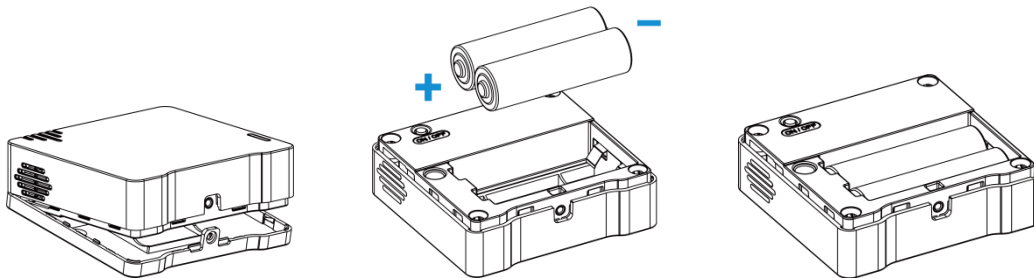
Threshold Alarm	When the level does not exceed the threshold	Green blinks
	When the level exceeds the threshold for more than one minute	Red blinks

4. Dimensions (mm)



5. Power supply

Remove the rear cover of the device to install the batteries. Do not reverse the direction of the batteries during installation.

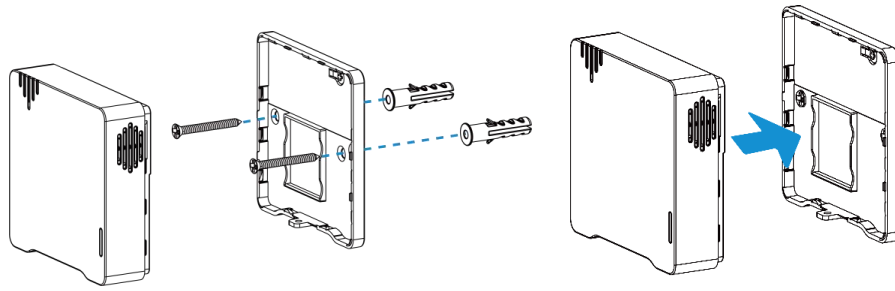


IMPORTANT: The device can only be powered by ER14505 Li-SOCI2 batteries.

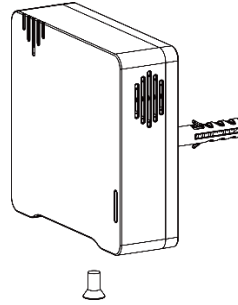
6. Installation

Fixed by screws

1. Remove the rear cover of the device, screw the wall plugs into the wall, and fix the back cover with screws on it. Install the back of the device.

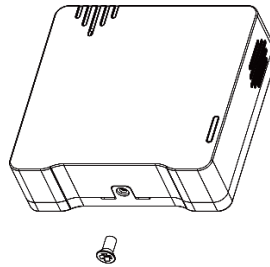


2. Attach the bottom of the device to the rear cover using the theft-detering screw.

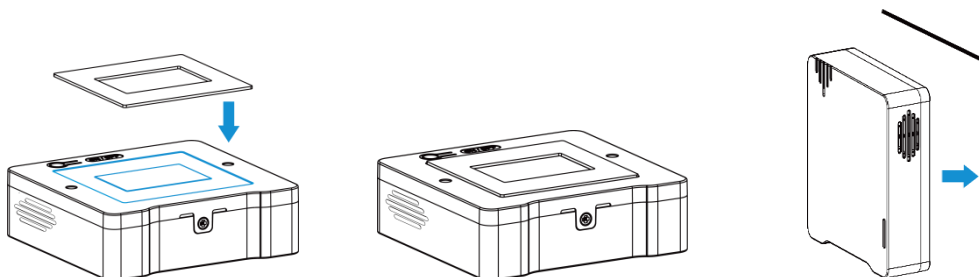


Fixed by 3M Tape:

1. Fix the bottom of the device to the rear cover using the theft-detering screw.



2. Stick the 3M double-sided tape to the back of the device, then tear other side of the tape off and press the device onto a flat surface. For break time, follow the instructions on the tape packaging.



IMPORTANT:

In order to ensure optimal detection, please install the device as follows:

- The recommended installation height is 1.2 m to 1.5 m from the floor.
- The distance between the device and walls or reflectors should be at least 1 m, and the distance between the device and doors or windows should be about 1.5 m.
- Do not install the device close to the noise source.
- The device's microphone should not be blocked or trapped by obstacles.
- We recommend installing the device on the ceiling when you need to measure the sound level in a small room.

Appendix A

Sound Level Guidelines

It is recommended to maintain environmental noise below 70 dBA over 24 hours (75 dBA over 8 hours) to prevent noise-induced hearing loss.

Source	Sound pressure level (dBA)
Hearing threshold	0
Breathing	10
Rustling of leaves	20
Whispering	30
Library or quiet residential area	40
Quiet office	50
Normal conversation	60
Busy traffic, normal radio	70
Noisy restaurant	80
Heavy Truck, Hair Dryer, Power Tools	90
subway train	100
Construction Noise	110
Rock Concert, Thunder	120
Pain threshold	130